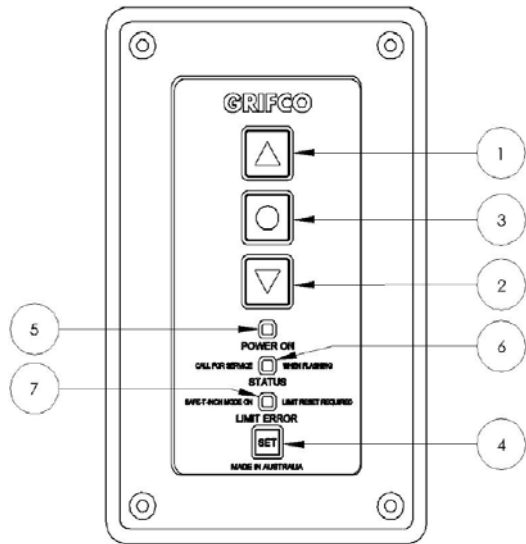


For use with eDrive+ 2.0 with radio-on-board.



GRIFCO FRONT PANEL



1. **UP** - Moves the door upwards
2. **DOWN** - Moves the door downwards
3. **STOP** - Stops the door
4. **SET** - SET button
5. **POWER ON** - Shows when the unit is mains powered
6. **STATUS** - Shows the status of the unit
7. **LIMIT ERROR** – When lit indicates limits are not set

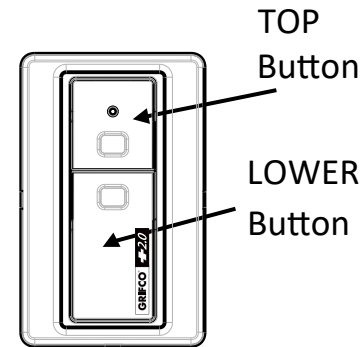


WARNING

To prevent possible **SERIOUS INJURY** or **DEATH** from a moving door:

- Use Wireless Entry Device within sight of the door and out of reach of children
- ALWAYS keep remote controls out of reach of children. NEVER permit children to operate, or play with remote controls.
- Activate door **ONLY** when it can be seen clearly, is properly installed, and there are no obstructions to the door travel.
- ALWAYS keep the door in sight until completely closed. NEVER permit anyone to cross the path of a moving door
- NEVER allow small children near batteries. If battery is swallowed, immediately notify your doctor.

PROGRAMMING



E138G Wireless Wall Control

To program the **E138G** Wireless Entry Device ensure the radio lock is removed then perform the following steps:

1. Press and hold the **SET** button on the GRIFCO front panel, then
2. While holding the **SET** button, press the **STOP** button 5 times (the **green** status light will light then continue flashing, indicating learn mode)
3. Let go of the **SET** button
4. Press the **E138G TOP** button
5. Then press the **E138G LOWER** button
6. The orange **LIMIT ERROR** light will flash each time to acknowledge the button has been pressed.
7. Press **STOP** button on the GRIFCO front panel (the green light will continue to flash).
8. Press the **E138G LOWER** button again
9. The green light will go out indicating exit learn mode.
10. Install the **RADIO LOCK** key on the eDrive2 board to prevent any further wireless entry devices being learned.

OPERATION

The E138G TOP button can be used to **TOGGLE** the action of the door between **close / stop / open** if an obstruction detection device is installed, or **stop / open** only if no obstruction detection device is installed.

The E138G LOWER button can be used to **CLOSE** the door. If no obstruction detection device is installed, the LOWER key must remain pressed to complete the door close sequence.

INSTALLATION

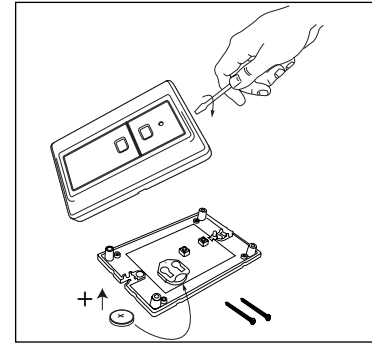


Disconnect power to the opener before installing this accessory to prevent accidental activation. Locate minimum 1.5m above the floor.

- Carefully pry open the E138M and locate the two screws for mounting.
- Attach to the wall using the two screws provided. If mounting to a plaster wall, wall plugs may be required.

NOTE: Do not over tighten screws.

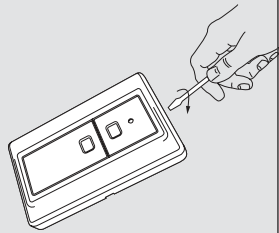
- Replace the front cover plate.



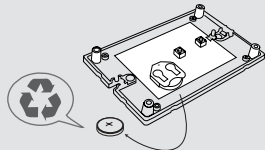
THE REMOTE CONTROL BATTERY

The lithium battery should produce power for up to 5 years. If the battery is low, the remote control's LED will not flash when the button is pressed. To replace battery:

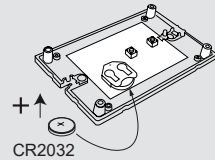
- 1** Use a screwdriver blade to pry open the case as shown



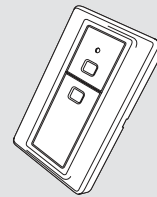
- 2** Remove the old battery. Dispose of old batteries properly.



- 3** Insert replacement batteries positive side up. Replace the batteries with only CR2032 coin cell batteries.



- 4** Replace cover.



WARNING

WARNING! This product contains a button/coin cell battery.

- The battery is hazardous.
- Keep new and used batteries away from children.
- Do not ingest battery. Chemical burn hazard.
- If the coin cell battery is swallowed or placed inside any part of the body, it can cause severe or fatal injuries in 2 hours or less.
- If the battery compartment does not close securely, stop using the product and keep away from children.
- If you think batteries might have been swallowed or placed inside any part of the body, call the 24-hour Poisons Information Centre on 13 11 26 in Australia, or the 24-hour National Poisons Centre on 0800 764 766 in New Zealand, or seek immediate medical attention.
- Dispose of used coin/button cell batteries immediately and safely. Flat batteries can still be dangerous.



REPLACEMENT PARTS

CR2032 Lithium battery - CR2032

ONE YEAR LIMITED WARRANTY

Chamberlain Australia Pty Limited / Chamberlain New Zealand (Chamberlain), the manufacturer of Merlin® automatic garage door openers, warrants to the original consumer purchaser of this product that it is free from defect in materials and/or workmanship for a period of 1 year from the date of purchase. Chamberlain is committed to manufacturing and supplying high quality goods. As part of this commitment, we seek to provide reliable service and support for our goods and are pleased to provide you, the original purchaser, with this Chamberlain Limited Warranty. The benefits given to you under this Chamberlain Limited Warranty are in addition to any rights and remedies that you may have under Australian or New Zealand consumer protection laws. Our goods come with guarantees that cannot be excluded under the Australian Consumer Law, or New Zealand Consumer Guarantees Act 1993. You are entitled to a replacement or refund for a major failure and for compensation for any other reasonably foreseeable loss or damage. You are also entitled to have for compensation for any other reasonably foreseeable loss or damage. You are also entitled to have the goods repaired or replaced if the goods fail to be of acceptable quality and the failure does not amount to a major failure.