

# eDrive +2.0 Control Boards



## C10A-4 Control Panel

Multiple functions at the wall control:

- Limit setting
- Power indicator
- Auto-close (10 sec increments)
- Fault diagnostics
- Door direction
- Remote learning
- External key switch options
- E-Stop for auxiliary emergency stop control

## Access Control Devices

Toggle input for access devices such as card readers, loop detectors or the Grifco STAR1000EVO transmitter management system

## Service Connection

Terminal for diagnostics & debugging of software (Grifco only)

## Mechanically Interlocked Contactors

Safety device for motor protection

## Dock Leveller Integration

Connect to a dock levelling device via relays 1 & 2

## 4 Relays for External Devices

Allow devices such as lights & sounders to behave in certain ways or connection to building management outputs

- Relay 1: Open Status
- Relay 2: Closed Status
- Relay 3: Door Moving Status
- Relay 4: Service Required (with DIP Switch configuration)

## Coaxial Antenna Connection

Connection for antenna

## External Receiver Cards

Connection for industry standard receiver cards

## Connection to Wall Control

Connection to the low voltage C10A-4 wall control (supplied with eDrive +2.0) or the advanced wall controls (see page 17)

- ← APE Encoder
- ← Expansion Board

← Motor

## Learn Button

Dedicated learn button for up to 64 Security +2.0 transmitters

## Reset Button

Reset safety beams when required

## Inching & Latching

Dip switches offer selection between 'inching' & 'latching' door behaviour in both open & closed directions

## Monitored Entrapment Protection Inputs

Inputs for 2 monitored safety beams and 1 safety edge

## 24V 150mA Power Supply

Unregulated constant power supply for peripherals such as sirens & lights

## Power Connection

240V single phase or 415V three phase power connection

## Door Activation Inputs

Wire in key switches, push buttons or card readers for open, stop or close

## Extended Limit Option

Wired input to send door to 3rd limit position

## DIP Switches

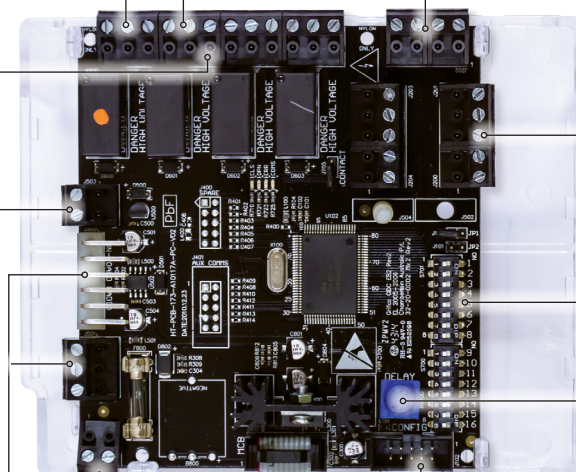
16 dip switches for door configuration behaviour

## Auto-Close Fine Adjustment

Infinite adjustment of auto-close time up to 5 mins

## Service Connection

Terminal for diagnostics & debugging of software (Grifco only)



## Auxiliary 24V Power Input

To provide external backup supply for relays